

ALUMINIUM EXTRUSION



About us 03

Sectors 04

- Automotive & Transport
- Machine
- General Industry
- Energy & Solar
- Construction & Building

Technology & Competence 34

- Aluminium Extrusion
- Aluminium Injection
- Powder Coating
- Surface Treatment
- Molding
- Test Center
- Logistic

-
- Product Development
 - Project Management
 - Quality Management

Sustainability 45

ABOUT US

We are a leading global manufacturer of extruded profiles. Revealing the experience of Yeşilova in the field of extrusion, Cansan Aluminium produces approximately 50 thousand tons per year.

Driven by our principles of quality, sustainability and innovation, we offer the industry a broad product portfolio, alloy capabilities, superior machinery, project and design support. For decades, we have been proud to serve the industrial sectors i.e. automotive, rail systems, construction and energy. We design and produce next generation products for e-mobility and we bring aluminium to life, 100% recyclable the most eco-friendly metal in the world.

-
- › 25.000 m² total area
 - › Annual production capacity of 50,000 tons/year
 - › R&D and design support
 - › IATF 16949 certificate

SECTORS

- Automotive & Transport
- Machine
- General Industry
- Energy & Solar
- Construction & Building

AUTOMOTIVE & TRANSPORTATION

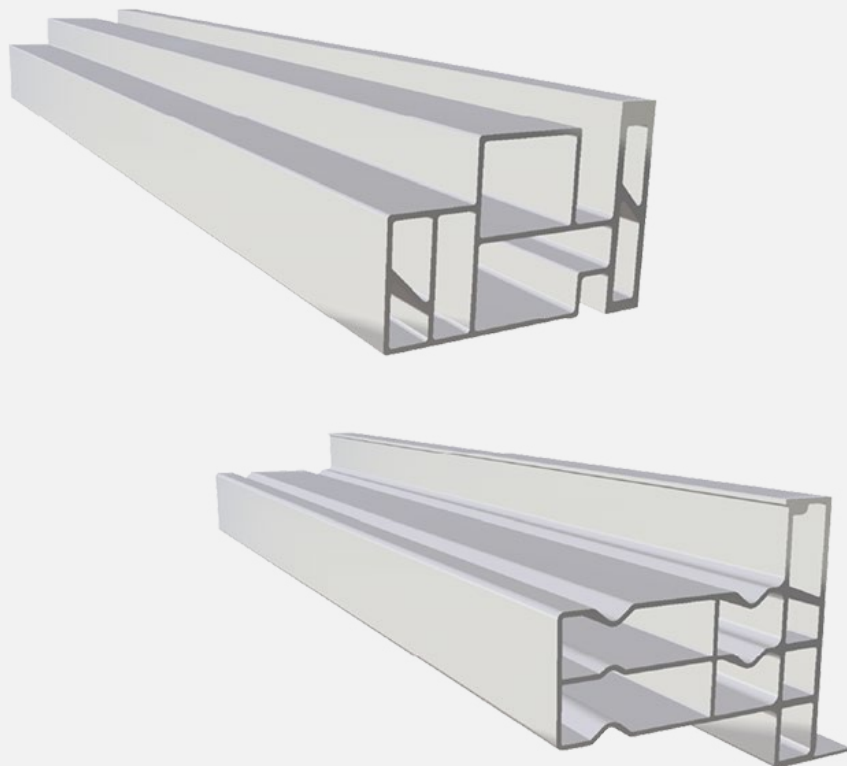
- Crash Box Profiles
- Battery Tray Profiles
- Anti-vibration Profiles
- Bearing Profiles
- Roof Rail Profiles
- Railway Systems Profiles
- Trailer Profiles
- Seatin Rail Profiles





Crash Box Profiles

With 6082, 6005, 6060 alloys, we produce C20/24/28 class profiles with high class strength values expected by German vehicle manufacturers. As Yeşilova, we produce products that meet all the requirements of TL-116-EN standards.



Battery Tray Profiles

We can produce the extrusion of complex profiles with different wall thicknesses with 6082, 6005A alloys with linearity tolerances up to 0.5mm per meter.



Anti-vibration Profiles

We produce products above international standards that prevent road and engine vibrations, meet expectations such as lightness and high mechanical strength in the chassis group of vehicles in the automotive sector, and contribute to their development.



Bearing Profiles

We produce products above international standards that prevent road and engine vibrations, meet expectations such as lightness and high mechanical strength in the chassis group of vehicles in the automotive sector, and contribute to their development.

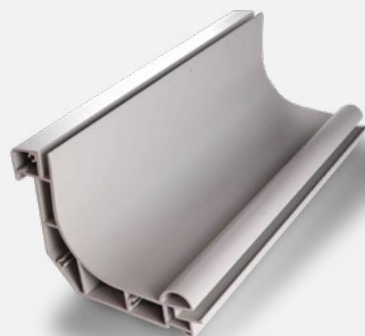


Roof Rail Profiles

We design, develop and manufacture the roof rail profiles of passenger and commercial vehicles by meeting the expectations of customers such as aesthetics, lightness and strength.

Railway Systems Profiles

Based on the expectations and requests of our customers, we produce many profiles for rail systems. We design, develop and manufacture modular systems by meeting their expectations such as aesthetics, strength, lightness, non-flammability and following international regulations.





Trailer Profiles

We produce side wall and rear cover profiles of vehicles in the trailer sector in line with customer demands and expectations.



Seatin Rail Profiles

We design, develop and produce the seat rail profiles of commercial vehicles by meeting the expectations of customers such as aesthetics, lightness and strength.

MACHINE

- Crane Systems Profiles
- Conveyor System Profiles
- Pneumatic System Profiles



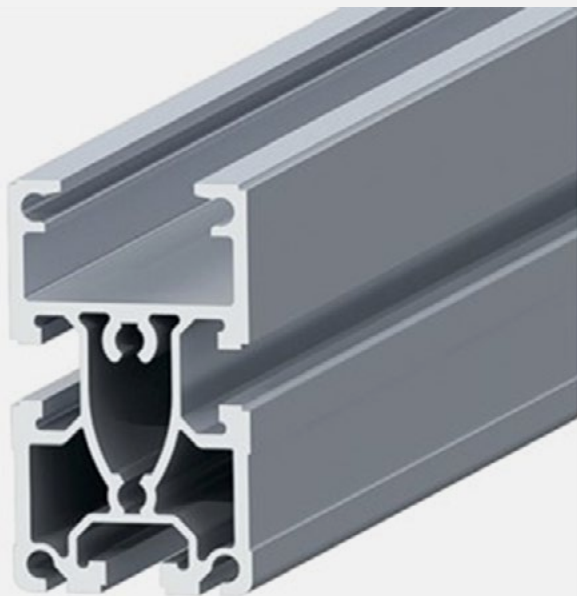
MACHINE



Crane Systems Profiles

In line with the demands and requests of crane system manufacturers, we produce products with high load-bearing strength and meeting all the requirements of DIN standards.

MACHINE



Conveyor System Profiles

In line with the demands of conveyor systems manufacturers, we produce products that meet EN 12020-2 tolerance norms.

MACHINE



Pneumatic System Profiles

In line with the demands of pneumatic system manufacturers, we produce high precision products that meet narrow tolerance norms.

GENERAL INDUSTRY

- Sigma Profiles
- General Industry Profiles
- Display System Profiles
- Industrial Door Profiles
- Cooler Profiles

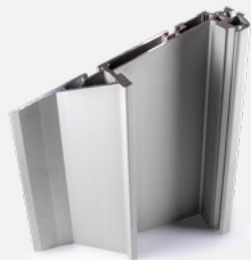


Sigma Profiles

Sigma profiles, almost everywhere in the world; It is preferred in the fulfillment of structural tasks. It meets both your engineering and aesthetic expectations with a single product. A simple rack, a multi-purpose assembly table or a complex production line; You can transform from design to reality with endless combination options. You can use it for a long time thanks to its durable structure, you can use it in different designs thanks to its disassembled apparatus, or you can prevent loss of value by recycling aluminum when the task is completed.

Thanks to the special alloy raw material we use while producing our Sigma profiles, our products are in F25 condition. In this way, compared to its counterparts; It is more durable and shows higher performance in the same geometries.

GENERAL INDUSTRY



General Industry Profiles

For companies operating in the field of General Industry, we produce products with high durability, visual and functional sensitivity in line with the demands.



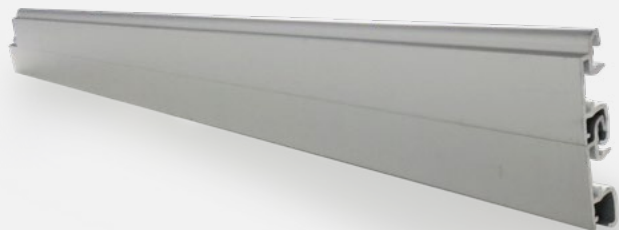
Display System Profiles

We produce products with high visual and functional sensitivity in line with the demands for companies operating in the field of Display Systems.



Industrial Door Profiles

We produce high precision products with narrow tolerances in line with customers' demands.





Cooler Profiles

We produce high precision products with narrow tolerances in line with customers' demands.

Energy & Solar

- Photovoltaik Solar Panel Profiles
- Under Construction System Profiles
- Thermal Solar Collector





Photovoltaik Solar Panel Profiles

In line with the demands and needs of companies producing Photovoltaic Solar Panels, we produce semi-finished products with corner wedges and covers, ready for final assembly.



Under Construction System Profiles

We produce products in line with the demands of companies operating in the field of solar systems and producing subconstruction systems.

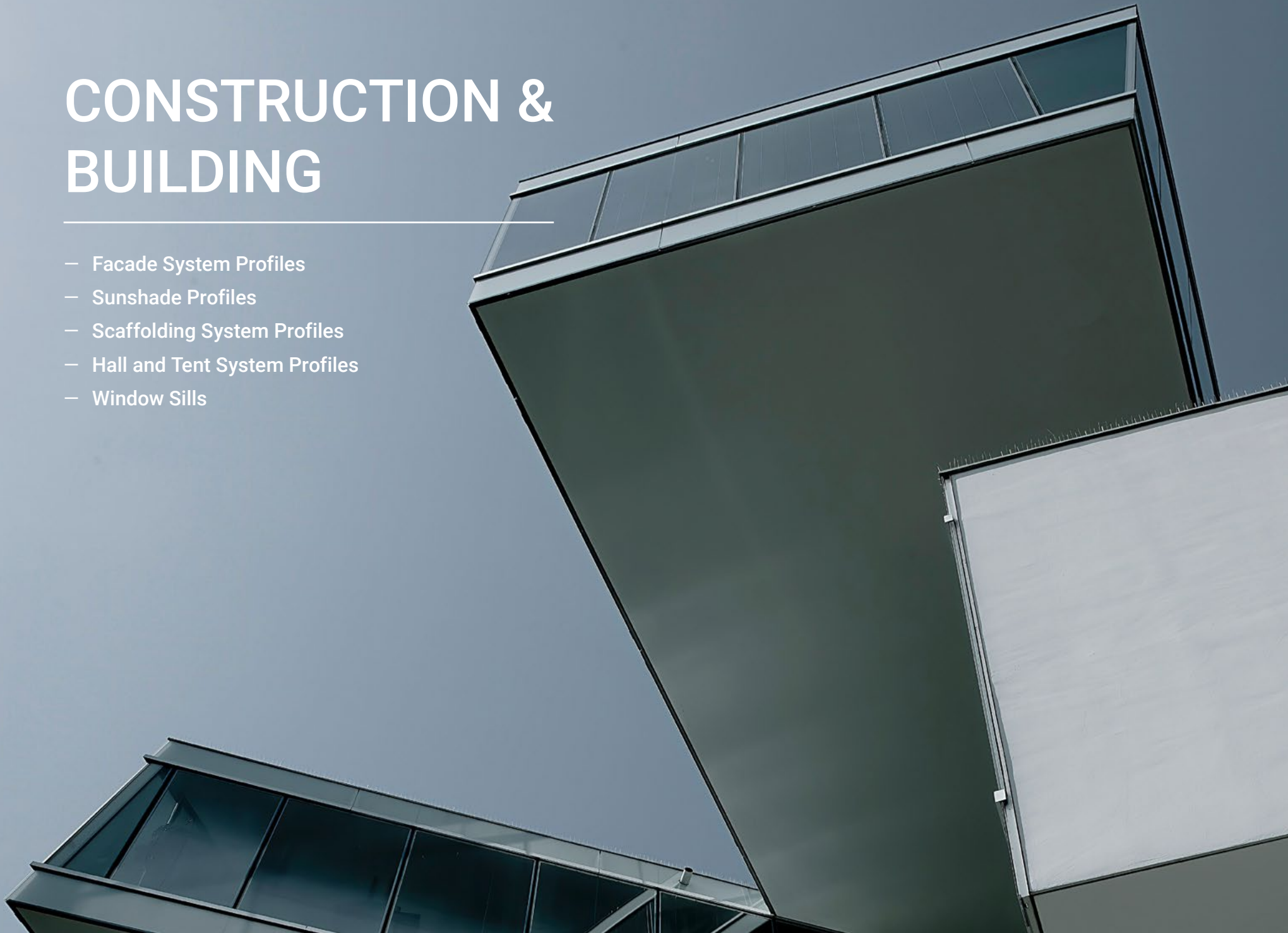


Thermal Solar Collector

In line with the demands and needs of companies producing Thermal Solar Collectors, we produce semi-finished products with corner wedges and covers, ready for final assembly.

CONSTRUCTION & BUILDING

- Facade System Profiles
- Sunshade Profiles
- Scaffolding System Profiles
- Hall and Tent System Profiles
- Window Sills





Facade System Profiles

We produce products in line with the demands and needs for companies operating in exterior cladding systems under the building sector.



Sunshade Profiles

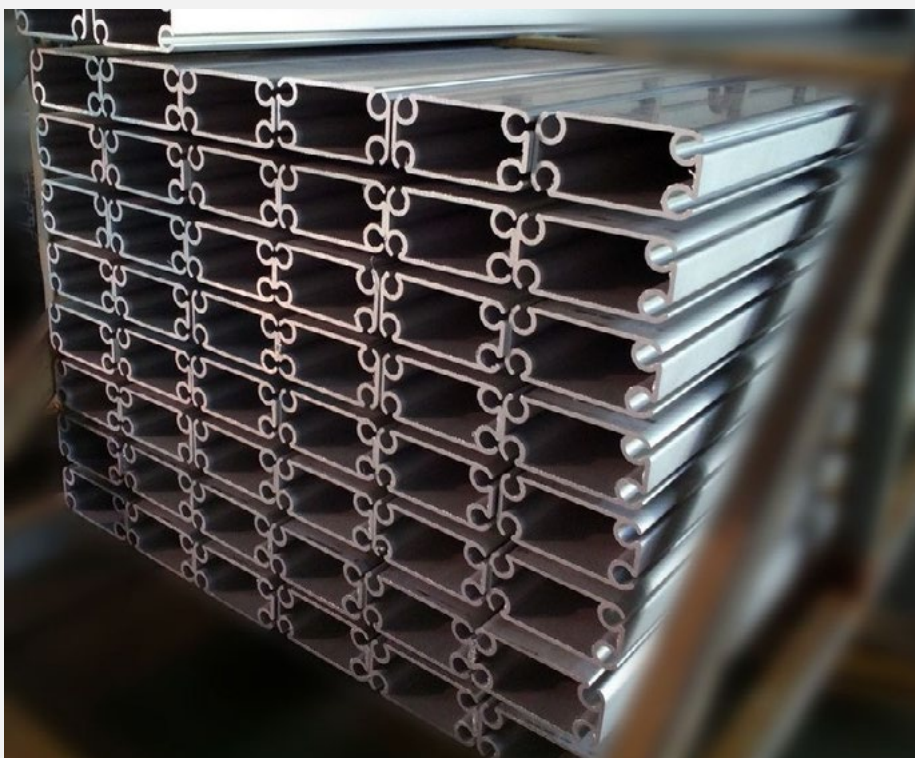
We produce products in line with the demands and needs for companies operating in sunscreen systems under the construction sector.



Scaffolding System Profiles

In line with the demands and requests of companies operating in anchorage and assembly systems, we produce semi-finished products with high strength and meeting international safety standards.





Hall and Tent System Profiles

In line with the demands and demands of companies operating in tent and awning systems, we produce products with high resistance and meet international security standards.



Window Sills

We produce products with high visual sensitivity for companies operating in the construction sector.



TECHNOLOGY & COMPETENCE

- Aluminium Extrusion
- Aluminium Injection
- Surface Treatment
- Powder Coating
- Molding
- Test Center
- Logistic

&

- Product Development
- Project Management
- Quality Management



Aluminium Extrusion

Aluminium extrusion, automotive and be in charge of rail systems minister; light weight, high strength, CO² at the beginning of their distribution played a role.

Big press in our integrated facility with our deep experience. Thanks to our capacities, we have an extrusion capacity of 50,000 tons/year. Profiles with a weight of up to 20 kg per meter, using 2xxx, 6xxx, 7xxx alloy raw materials in lengths and narrow. We produce in tolerances.



Aluminium Injection

What we have in material automotive with our knowledge and experience expectations of many industries, including 5 different alloys and closures for force, between 200 tons and 1050 tons with our varying press capacities. Simultaneous production thanks to automation we can do it.

In our injection lines equipped with the latest technology, the narrowest. We produce visual, structural and safety parts in tolerances.



Surface Treatment

Numerous alternative colors for aluminum and we provide the chance of texture view. 10,000 to 7m in length in our facility with a capacity of tons/year. profiles up to QUALICOAT, QUALANOD and anodized in SEASIDE standards is done.

In the paint shop established in accordance with international standards and special gloss and high-level visual requirements in our anodizing facility is provided.



Powder Coating

Numerous alternative colors for aluminum and we provide the chance of texture view. 3,000 to 7m in length in our facility with a capacity of tons/year. Profiles up to QUALICOAT, QUALANOD and powder coating in SEASIDE standards is done.

Special gloss and high-level visual requirements are provided in the paint shop and anodizing facility created in accordance with international standards.



Molding

In the dimensional and physical tolerances of the product and of decisive importance in surface quality. All design and production of extrusion dies production processes by our competent team is done.

The right product in the first production thanks to our analysis and simulation capabilities we can get.



Test Center

As Yeşilova Holding R&D Center, we conduct research and test studies on both material and product basis.

Our laboratory team, which consists of competent employees, performs metallographic and mechanical experiments to determine the characteristic properties of materials. At the same time, we carry out strength tests and environmental tests such as dimensional and mechanical verification, material verification, paint and surface verification, and environmental tests at the customer's workplace, with our devices with which we can test product expectations.



Logistics

Our products are sent to all over the world with the expected quality and on time delivery awareness.

We have a tracking system where you can monitor all shipment processes digitally. Acting with the awareness of minimizing our carbon footprint in all our shipping processes for a sustainable world; we use recyclable materials in packaging and we prefer shipping methods.



Product Development

We aim to anticipate new technological trends and offer differentiating products that meet efficiency, lightness, cost, quality and safety requirements.

When designing and manufacturing our products, we work meticulously from the early stages of development to final production.


Project Management

We adopt a management approach in line with agile project management, team management, mastery of customer specific requests, solution and focus, proactive approach, and perfect customer experience that meet industry requirements.

TECHNOLOGY & COMPETENCE

Quality Management

We serve as a strategic solution partner trusted by our customers with our certificates and programs that meet production requirements.



Our goal is “A Sustainable World with Happy Employees”

As Yeşilova Holding, our goal is “A Sustainable World with Happy Employees” in every field that we operate. We follow this motto, our values and principles as we move forward towards this goal.

To reach our purpose, we adopt sustainability in all 3 aspects: Environmental, Social and Economic as our core strategies and integrate to the way we do business in all our companies and processes.

YEŞİLOVA

CANSAN
ALUMINIUM

cansan@yesilova.com.tr — cansan.com.tr

yesilova.com